

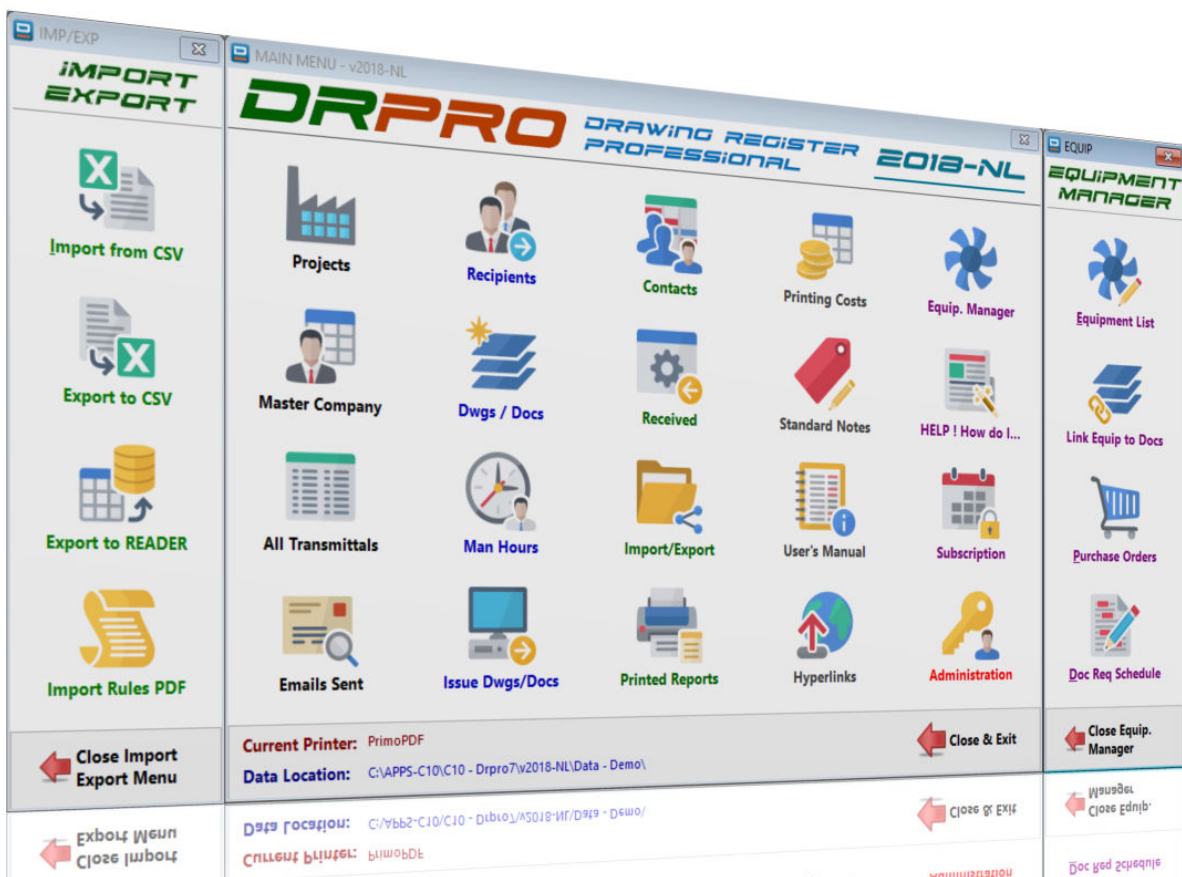
# DRPRO

## DRAWING REGISTER PROFESSIONAL

# 2018-NL SP4

October 2020

## RELEASE NOTES AND UPGRADE INSTALLATION INSTRUCTIONS



PRINT THIS DOCUMENT FOR EASY REFERENCE WHILE INSTALLING

Web Site: [www.LDAcomputing.com](http://www.LDAcomputing.com)

**DRPRO 2018-NL SP4** (Service Pack 4) is now available for download from our [Web Site](#). **This new version requires a re-install of DRPRO** (AFTER you've backed-up your DATA !).

The new **NL** version (**NL** = **N**etwork **L**icence) of **DRPRO** will be installed in a separate folder to existing DRPRO's. You won't lose any existing data (but you must back it up first!). And it can also be installed on ALL workstations in the office!

**PLEASE NOTE:** If your office has a Network Manager or IT Dept. that handles software updates, or even somebody designated to handle all DRPRO related issues, please forward this email to the correct person in your organization, so the update can be done in an organized manner, following the procedures set out below.

**Another IMPORTANT Note:** When installing **DRPRO 2018-NL SP4**, you need to have full Administrator rights on the local machine when logging into Windows, and you need to be running at least Windows 7 or later (Not Windows Vista, XP or older). Microsoft has already dropped support for Windows XP, so we don't recommend you use it...

## Which Installation Sequence should I use?

- **Page 3** - If this workstation has an earlier version of DRPRO installed (upgrading from an older version)
- **Page 4** - If this workstation does not have any previous DRPRO installed (on an existing DRPRO site)
- **Page 5** - If this is a new completely installation with a new DATA Set (new clean install)
- **PLEASE NOTE:** In the first two cases above, the DATA must already be on a Server or must be copied to a Server from a local workstation.

**REMEMBER:**  
**BACKUP YOUR DATA FOLDER BEFORE**  
**UPGRADING !!!**  
**JUST ZIP IT!**  
**NO EXCUSES...**

**PLEASE BACKUP YOUR DATA FILES FIRST**, before you install this new version, whether the Data is on the local machine or on a Server and get everybody OFF DRPRO while at it. The DATA files are in a DRPRO\DATA folder on the Server. Look at the bottom of DRPRO's main Menu for the exact Data Location. Also check with IT Dept.

---

## **DRPRO-NL Installation Instructions:**

**(Where an older DRPRO version is already installed locally – And there is existing DRPRO DATA on the Network)**

**NOTE:** It is highly recommended that the person that will be responsible for the running and upkeep of DRPRO in your office has a sound knowledge and understanding of the Windows OS and your company's IT infrastructure in general, as we are not in a position to provide support on their inner workings...

1. Download [Setup-Drpro-2018-NL.zip](#) from our web site.
  2. If you currently have a multi-user DRPRO, you must **first put the existing DRPRO in 'Maintenance Mode'** (From the top pull-down Menu, click 'Administrator' then select 'System Maintenance ON/OFF') and wait 5 minutes for everybody to exit DRPRO (it will automatically exit after 5 minutes). Don't proceed until everybody is off DRPRO. Ask around if need be.
  3. Now, **BACKUP YOUR DATA FOLDER**. Just creating a ZIP file of its full contents is good enough. Do it as a precaution. We cannot be held responsible for loss of data if something goes wrong during the file upgrade process. Everything else can be replaced, but not your DATA if it goes belly-up!!
  4. For ease of installation, copy and then Unzip the installation file **Setup-Drpro-2018-NL.exe** to some accessible folder on the Server so that you can access it from each workstation and install directly from there (or USB flash drive).
  5. Now, from the first workstation to be upgraded, run the **Setup-Drpro-2018-NL.exe** file that's on the Server and select '**Program Files Only**' from the installation options. Accept all defaults and let it complete the installation.
  6. Once installed, first start the new **DRPRO 2018-NL CONSOLE** icon on the Desktop and it will automatically start a file upgrade process, which is **done only once**. Depending on which version you are upgrading from, this process could take quite a while. **DO NOT ABORT IT !!!** Let it finish till the end. Have an extra cup of coffee or two if need be!
  7. After the file upgrade process is complete, exit the **DRPRO 2018-NL CONSOLE**, start **DRPRO 2018-NL** from the new Desktop icon and login with your usual Username and Password.
  8. **IMPORTANT STEP:** Remember to switch the Maintenance Mode to **OFF**. (From the top pull-down Menu, click 'Administrator' then select '**System Maintenance ON/OFF**'). Remember that you must login with the same user name that activated the Maintenance Mode...
  9. Repeat step 5 for each additional workstation where an older version of DRPRO was previously installed, then start the new **DRPRO 2018-NL CONSOLE** first, exit when the Login Window appears, then start **DRPRO 2018-NL** and login as usual. Remember, the number of simultaneous logged-in users is limited to the number of Network Licences!
  10. After you are happy that the new **DRPRO 2018-NL** is working as expected and all your Data is there, you may delete any old DRPRO 2010/2011/2013/2017 icons on your desktop as well as older installations of DRPRO.
  11. You may need to **Register the Product** to activate the number of Network Licences purchased. From the Main Menu click 'Subscription' and then 'Register Product' and drag & drop the **REGFILE** emailed to you into the correct block in the Registration Window. You'll need to first save (or drag & drop) the **REGFILE** to the Desktop or a folder in Windows Explorer and then drag & drop into the Registration Window.
  12. For the remainder of the workstations that will have a clean new DRPRO install, refer to the next Page (4).
-

## DRPRO-NL Installation Instructions:

(When installing DRPRO-NL on additional workstations – And there is existing DRPRO DATA on the Network)

**NOTE:** It is highly recommended that the person that will be responsible for the running and upkeep of DRPRO in your office has a sound knowledge and understanding of the Windows OS and your company's IT infrastructure in general, as we are not in a position to provide support on their inner workings...

1. Download [Setup-Drpro-2018-NL.zip](#) from our web site (if not already done...).
  2. For ease of installation, copy and then Unzip the installation file **Setup-Drpro-2018-NL.exe** to some accessible folder on the Server so that you can access it from each workstation and install directly from there. (You could also use a USB flash drive).
  3. Now, from the first new workstation to be installed, run the **Setup-Drpro-2018-NL.exe** file that's on the Server and select '**Program Files Only**' from the installation options. Accept all defaults and let it complete the installation.
  4. Once installed, first start the new **DRPRO 2018-NL CONSOLE** icon on the Desktop to initialize the local Data files. This is **done only once** after a fresh new install. It will first ask you for the location of the DATA folder. Point it to the correct location on the Server and click Save. All workstations must point to the same Data folder! Click 'Abort & Exit' when the Console Login Window appears. There's no need to go in at this stage.
  6. Start **DRPRO 2018-NL** from the new Desktop icon and login with your assigned Username and Password (check with your DRPRO administrator for these).
  7. Repeat steps 3 to 5 for each additional new DRPRO workstation.
  8. Although you can install **DRPRO 2018-NL** on every workstation in the office, remember that the number of simultaneous logged-in users is limited to the number of Active Network Licences!
    - One Network Licence = One User logged in at a time
    - Two Network Licences = Two Users logged in at a time
    - Etc...
-

## DRPRO-NL Installation Instructions:

(A clean new installation - Where no existing DRPRO Data and no DRPRO Programs are installed anywhere)

**NOTE:** It is highly recommended that the person that will be responsible for the running and upkeep of DRPRO in your office has a sound knowledge and understanding of the Windows OS and your company's IT infrastructure in general, as we are not in a position to provide support on their inner workings...

Download the latest [Setup-Drpro-2018-NL.zip](#) file from [www.LDAcomputing.com](http://www.LDAcomputing.com) web site, save it in a temporary folder in your computer or network location and **UNZIP** it to extract the installation file **Setup-Drpro-2018-NL.exe**.

A clean new installation of **DRPRO 2018-NL** is divided into two stages:

- 1) First install the DATA files on a suitable location on a Server in your local network. Name that folder location as **DRPRO**. When running the installation file **Setup-Drpro-2018-NL.exe**, select the "**Data Files Only**" option (the second option) and point it to the pre-prepared folder on the Server. The installation process will automatically create a subfolder named **DATA** with all the startup demo data files. This step is done once only. **DO NOT install over existing DATA!!** Look at the previous pages if you already have DRPRO DATA on your server from a previous version.
- 2) The second installation step is done on each workstation that will host the **DRPRO 2018-NL** program files. Run the installation program **Setup-Drpro-2018-NL.exe**, select the "**Program Files Only**" option and accept all other defaults. The program must be installed on a local drive of each workstation. **DO NOT install it on a Server!**
- 3) Once the two steps above are complete and at least one workstation has the program files installed, start first the **DRPRO 2018-NL CONSOLE**, so as to initialize the local Data Files, then specify the DATA location on the Server & click 'Save'. Restart the Console a 2<sup>nd</sup> time to initialize the Data Files on the Server, then exit the CONSOLE and start **DRPRO 2018-NL** from the desktop icon. If this is the first time **DRPRO 2018-NL** is running on this network, it will be automatically loaded with a 30-day **REGFILE** for testing and appraisal purposes.
- 4) You need to **Register the Product** to activate the number of Network Licences purchased. From the Main Menu click 'Subscription' and then 'Register Product' and drag & drop the **REGFILE** emailed to you into the correct block in the Registration Window. You'll need to first save (or drag & drop) the **REGFILE** to the Desktop or a folder in Windows Explorer and then drag & drop into the Registration Window.
- 5) Please note that all **DRPRO 2018-NL** users must have **Full Read+Write** access to the Network Folder where the DATA files reside, and the correct permissions must be given by the network administrator (IT input required).

---

As mentioned above, you can install **DRPRO 2018-NL** on every workstation in the office but remember that the number of simultaneous logged-in users is limited to the number of Network Licences purchased!

Should you have any queries or comments on the above, please do not hesitate to contact us on any of the numbers below. We'll be glad to assist in getting your **DRPRO 2018-NL** up and running. If there's no reply, please leave a message and we'll get back to you a.s.a.p. Don't just hang-up, please leave a message!

Many thanks and best regards,

**Luis De Almeida**

PrTech Eng MSAICE MSAISC MIPET

**For: LDA Computing**

Email: [LDA@LDAcomputing.com](mailto:LDA@LDAcomputing.com) Web: [www.LDAcomputing.com](http://www.LDAcomputing.com)

Tel: +27 11 452-5824 Fax: +27 866 134 178 Mobile: +27 82 822-9094

